

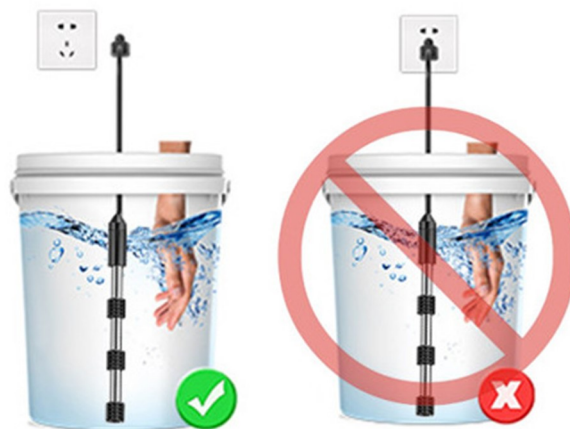
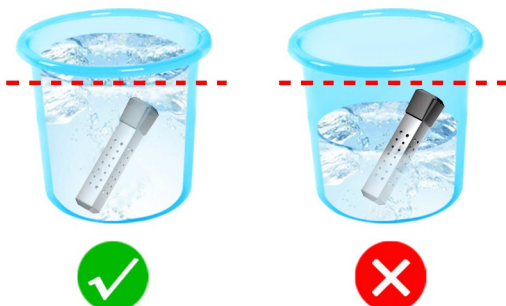


IMMERSION WATER HEATER INSTRUCTIONS

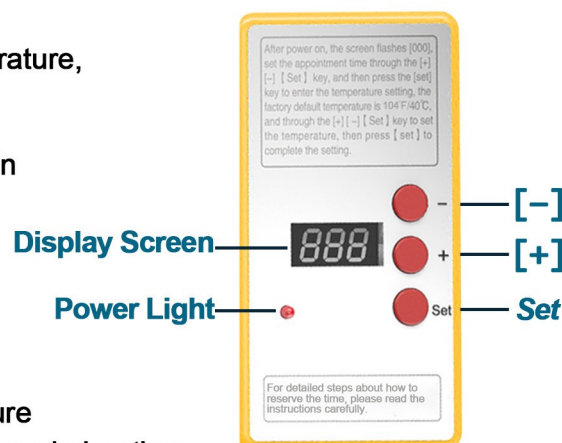


Please read these instructions carefully before usage



Cautions



- 1 The height of the water surface of the container must be higher than the heater, and the water temperature probe is placed in the middle of the water level to reduce the water temperature detection error, and finally plug in the power supply for setting.
- 2 During heating, the body is not allowed to touch the water. Please unplug the plug and touch the water again.
- 3 After the temperature is set, when it is heated to the set temperature, it will automatically power off and an alarm will sound.
- 4 If you want to modify [Reservation Time] or [Set Temperature] in the middle, long press [SET] to re-enter the setting page.
- 5 If you want to [stop heating] during the heating process, press [SET] to stop heating. Press [SET] again to reheat.
- 6 If the plug is not unplugged, the heater will automatically start when the water temperature drops by 9°F. When the temperature reaches the set temperature, it will automatically power off and cycle heating.
- 7 The heater factory default temperature is 104°F.



Boiling time reference

Container	Power	Temperature	Time
 5 Gallons	1500W	104°F (40°C)	25-30 minutes
	2000W	104°F (40°C)	20-25 minutes
	2500W	104°F (40°C)	18-20 minutes
	3000W	104°F (40°C)	15-18 minutes
 30 Gallons	1500W	104°F (40°C)	180-200 minutes
	2000W	104°F (40°C)	150-180 minutes
	2500W	104°F (40°C)	120-150 minutes
	3000W	104°F (40°C)	100-120 minutes

By analogy, the approximate boiling time can be calculated, but because the starting water temperature varies from place to place, the heating time is only used as a reference value. In particular, the water volume of the bath tub is generally 50 gallons, and the heating time takes a long time, and it needs to be heated in advance. There is more water and slow heating, which it is only objective law but not a product problem. If you need to speed up, you can use two heaters to heat at the same time, and the heating time will be halved, but the two products must be plugged into two different sockets separately.